

Posit Workbench Extension in JupyterLab

Table of contents

Proxying web servers 1

The [Posit Workbench Extension for JupyterLab](#) provides several useful tools when developing in JupyterLab sessions running on Posit Workbench.

- Quick access to the Posit Workbench home page from the **Posit logo** button in the Menu Bar at the top-left of the screen.
- Quick access to the Posit Workbench home page from the Command Palette. Use **Cmd + Shift + C** for macOS or **Ctrl + Shift + C** for Windows to open the Command Palette. Then type “Return to Posit Workbench Home”.
- Proxied Servers view to securely proxy application and API web servers available from the **Posit logo** in the Sidebar on the left-hand side.

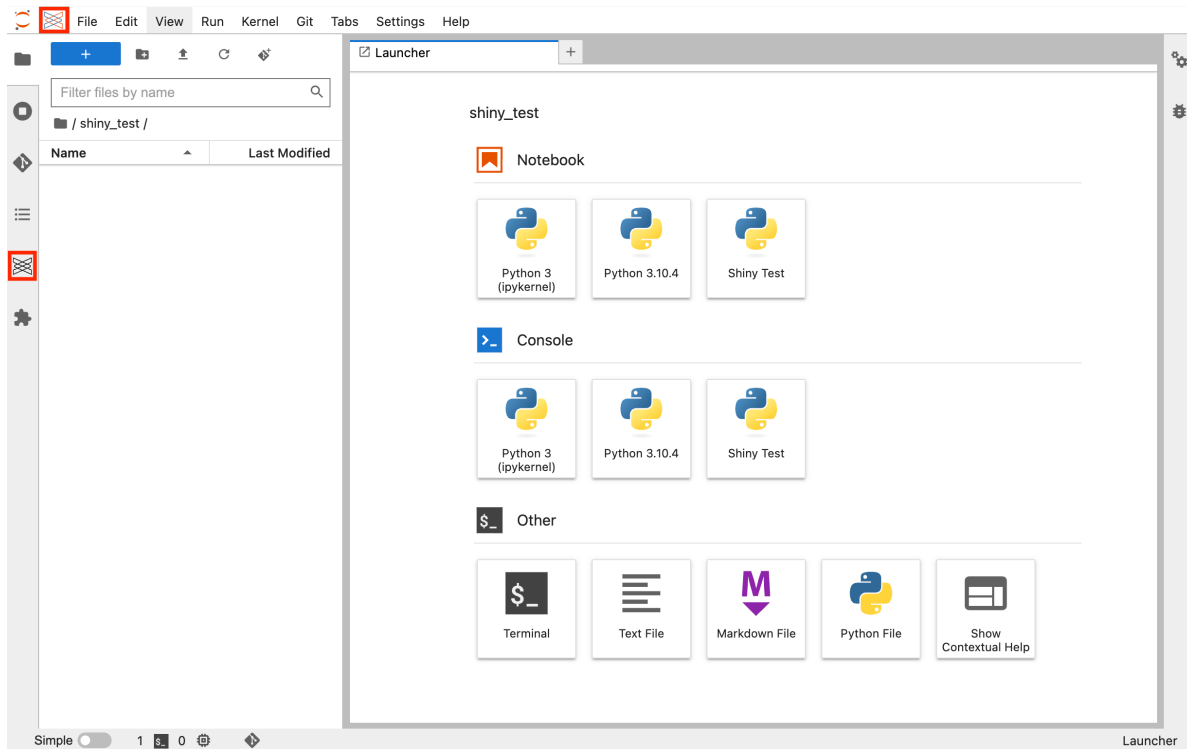
i Note

If the Posit Workbench Extension for JupyterLab is not installed, please contact your administrator and refer them to these [installation instructions](#). Without the extension JupyterLab sessions will launch but without the additional features.

Proxying web servers

The Posit Workbench Extension includes a Proxied Servers view when selecting the extension from the Side Bar. This view contains a list of currently running web servers. Each item in this list includes the web server’s name and the port the process is running on. Selecting an item opens the server in a new browser tab.

The extension determines which servers to display by searching through your currently running processes for those with open and listening sockets. The extension excludes processes it expects and recognizes as non-development servers, such as R and Jupyter sessions. For R and Python processes, the extension represents the server’s name as the directory name.



We have ensured the following server types can be proxied correctly when using the extension in JupyterLab sessions. Other application types may work as expected.

- Quarto
- Shiny for Python
- Shiny for R