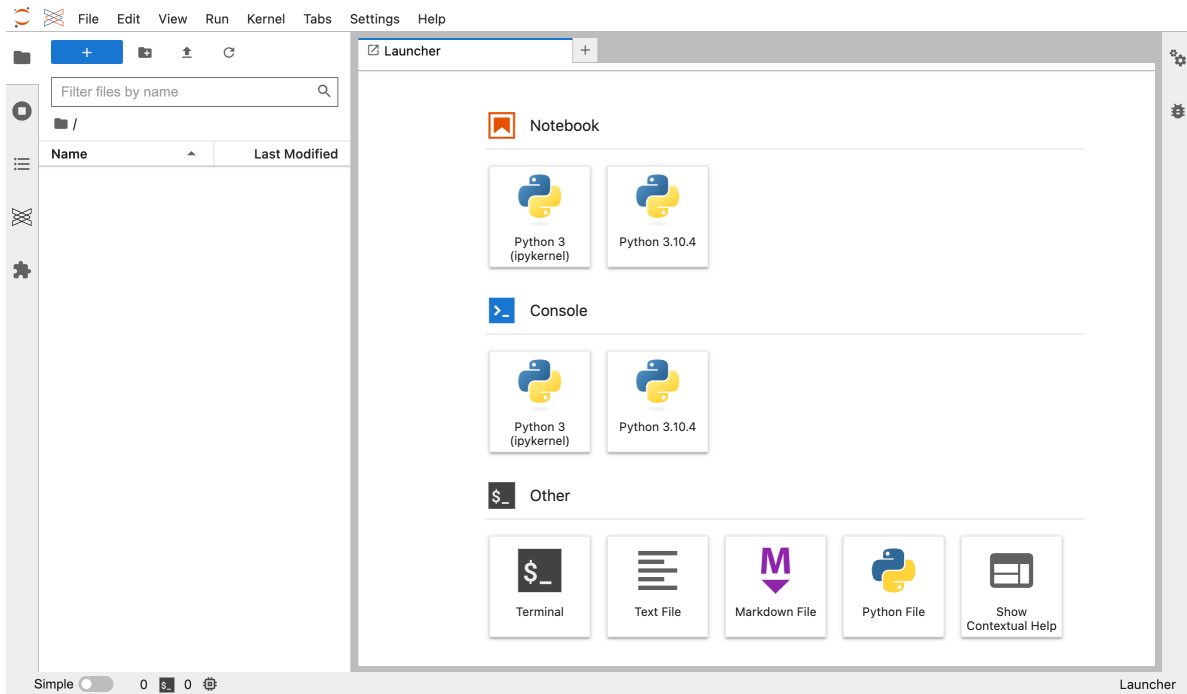


Getting Started with JupyterLab

Table of contents

Start a JupyterLab session	2
Return to the Posit Workbench home page	2

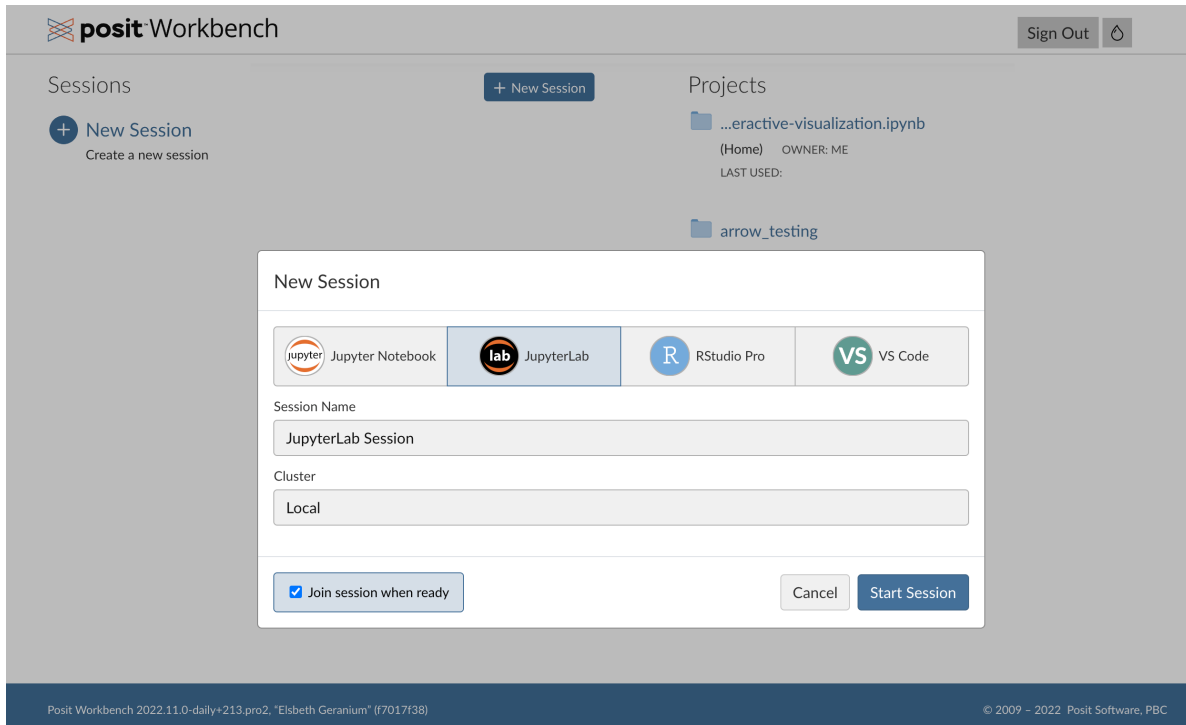
Posit Workbench supports launching JupyterLab sessions from the Posit Workbench home page. [JupyterLab](#) is a popular source-code editor and interactive development environment built by Project Jupyter.



Start a JupyterLab session

To start a new session:

- From the Posit Workbench home page, click **+ New Session**.
- Click the **JupyterLab** button.
- Click the **Start Session** button.



Once the session is ready Posit Workbench automatically opens JupyterLab in your current browser window.

Tip

If you do not see **JupyterLab** as an option in the Editor drop-down, then please reach out to your System Administrator for Posit Workbench.

Return to the Posit Workbench home page

To return to the Posit Workbench home page, click the **Posit Logo** button located at the top-left section of the menu bar.

The image shows a file manager interface. At the top, there is a menu bar with icons for File, Edit, View, Run, Kernel, and Git. A red box highlights a specific icon in the top-left corner, which is a square containing a stylized 'X' or 'W' shape. Below the menu bar, there is a toolbar with a folder icon, a blue button with a white plus sign, and icons for adding, uploading, refreshing, and deleting. A search bar labeled "Filter files by name" is present. Below the search bar, the current directory is shown as "/ shiny_test /". A table with two columns, "Name" and "Last Modified", is visible, but it is currently empty. On the left side, there is a vertical sidebar with several icons, including a square, a diamond, a list, a stylized 'X', and a puzzle piece.