

Installation

Table of contents

| | |
|-----------------------------|---|
| Installation | 1 |
| Microsoft Windows | 1 |
| Mac | 3 |
| Linux | 4 |

Installation

i Note

The latest version of the installers that we reference below are available on our [Download RStudio Desktop Pro](#) page.

If you require a different version of RStudio Desktop, you can find previous versions on our [RStudio IDE / Workbench - Previous Versions](#) page.

Microsoft Windows

RStudio Pro for Windows requires a 64-bit edition of Microsoft Windows 10 or newer.

Installer

Download the self-extracting installer (.exe) and execute it. Follow the prompts in the setup wizard. Administrator access is required to complete the installation. The installer will create a shortcut for RStudio and an Add/Remove Programs entry for uninstall.

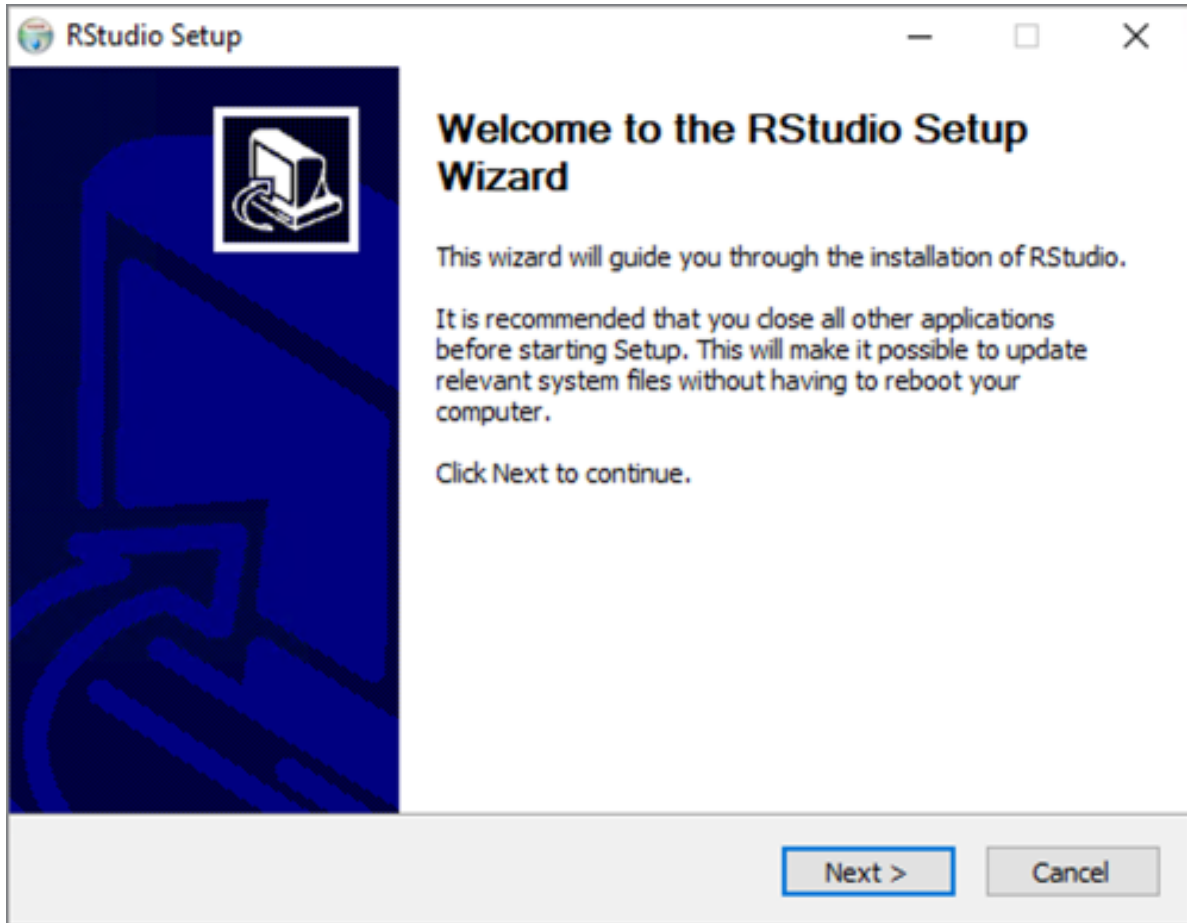


Figure 1: RStudio Windows Setup Welcome Page

Zipfile Option

A zip file may be downloaded instead of the self-extracting installer. Download and extract the .zip to any location. RStudio may then be run directly from that location via `rstudio.exe` (in the `bin` folder).

Mac

RStudio for Mac requires macOS 11 (Big Sur), or newer. Download the disk image (.dmg) and open it. Drag the RStudio icon to Applications then eject the disk image once complete. To uninstall, move RStudio from where it was installed to the trash.

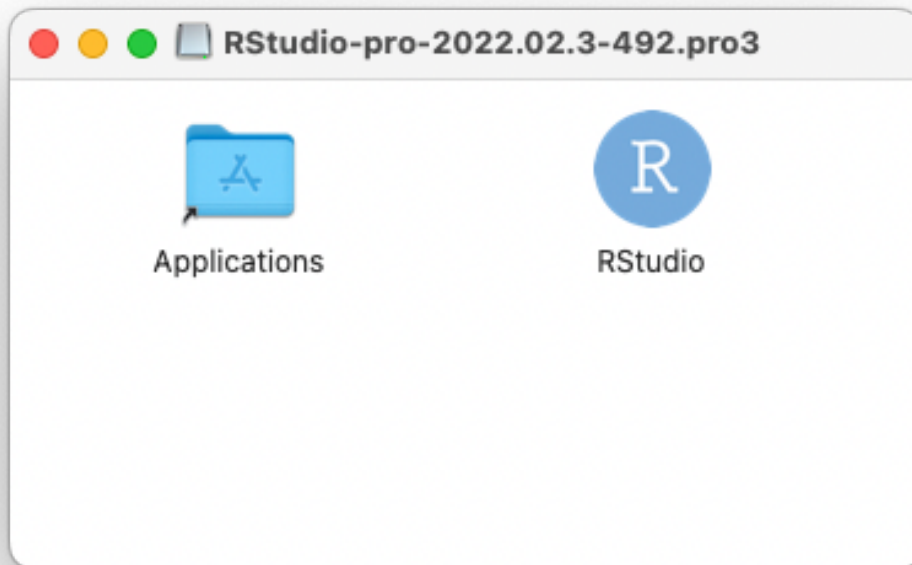


Figure 2: RStudio Pro Mac Disk Image Contents

Apple Silicon (Mac M1/M2)

If you are running RStudio on a Mac with Apple silicon, Rosetta 2 should be installed. RStudio warns you at startup if an existing Rosetta installation cannot be detected.

To install Rosetta 2 manually:

- Ensure RStudio is closed, then
- Open a Terminal and run the following command:

```
/usr/sbin/softwareupdate --install-rosetta
```

Once you've installed Rosetta, reopen RStudio.

For more information regarding Rosetta 2 on Apple silicon, visit [Apple's support documentation](#).

Linux

RStudio produces binary packages targeting the following 64-bit Linux desktop distros. Download the appropriate package and install using system tools.

| Linux Distro | RStudio package format |
|---|------------------------|
| Debian 10, Ubuntu 18.04 LTS, Ubuntu 20.04 LTS | deb |
| Ubuntu 22.04 LTS | deb |
| Debian 9 | deb |
| RHEL/CentOS 7 | rpm |
| RHEL 8 | rpm |
| OpenSUSE/SLES 15 | rpm |

Linux desktop users may need to import [RStudio's public code-signing key](#) prior to installation, depending on the operating system's security policy.